

LINEAR LIGHT 线形洗墙灯



3D万向 SERPENTINE.....162

刀锋 LR-1.....166

锋芒 LR-2.....170

剑威 LX-1.....174

幻影 TX-2.....171

战斧 LB-1/LB-2.....176

莱福XI LINEFLOOD XI.....178

莱福X LINEFLOOD X.....180

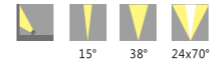
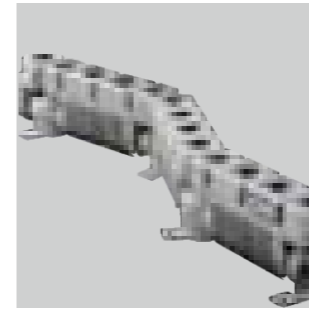
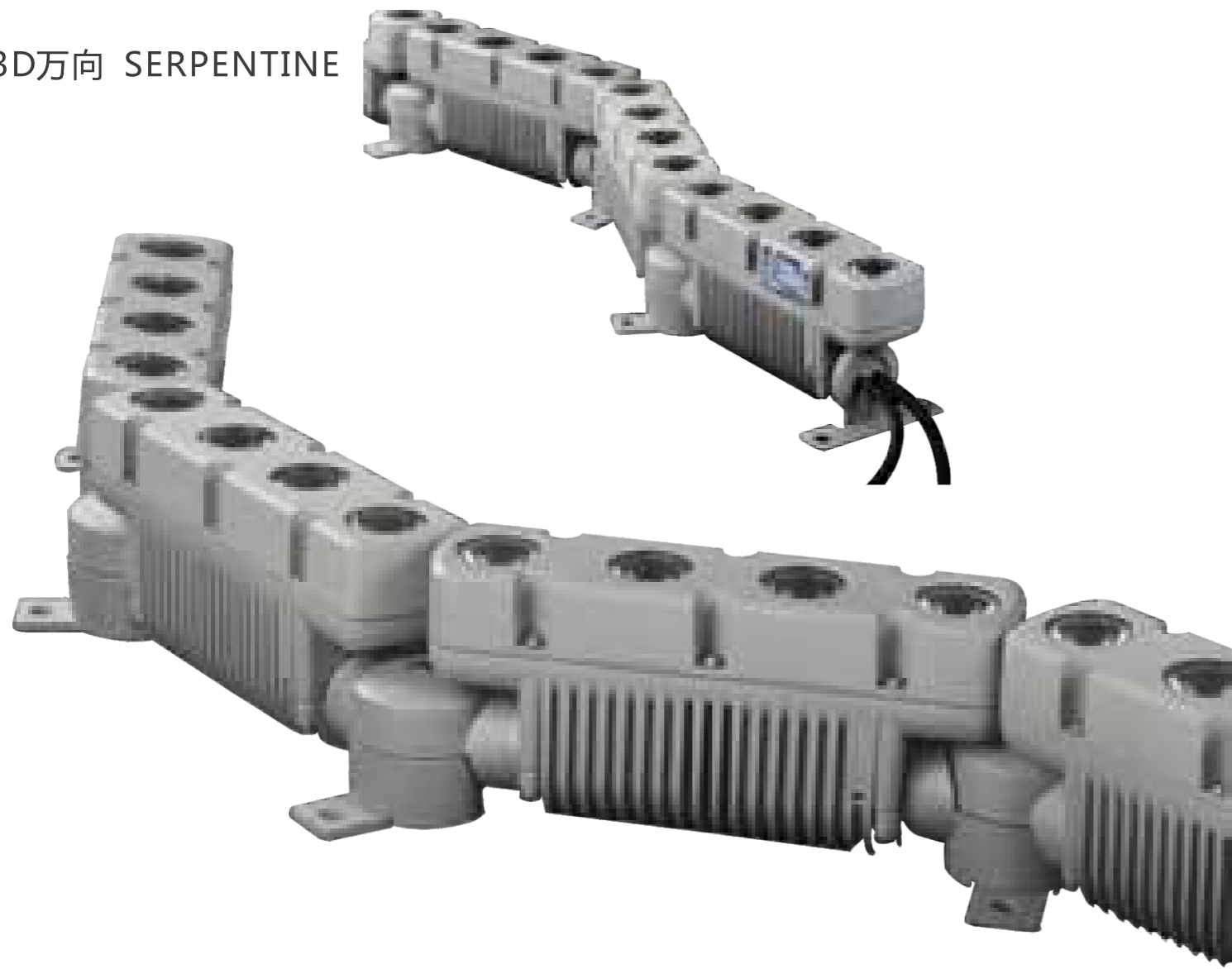
精致LX-2.....182

精致LX-3.....184

莱拉VI LINENLIGHT VI.....186

莱拉VII LINENLIGHT VII.....188

精致LX-1.....190



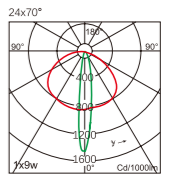
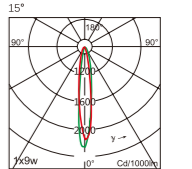
铝合金挤压成型，端盖采用高压压铸铝制件。
 灯具表面保护层采用静电喷涂或阳极氧化处理工艺，使整灯耐腐蚀。
 一体化散热结构，确保LED光源发光效率及使用寿命。
 使用进口耐老化硅胶密封圈，使灯具维持长期IP65防护等级。
 灯具外露的连接线为硅橡胶线，耐阳光紫外线的长期侵害，保障灯具使用安全。
 有单色常亮、单色灰度变化、RGB混色三种照明方式。
 受控灯具配用DMX512协议的控制系統。
 适用于户外建筑圆弧形立面照明，能满足5M高被照面洗亮。

专利号：201120124538.5

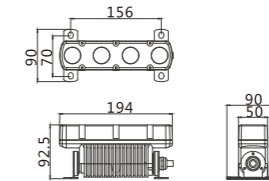
Extrusion aluminum alloy, die cast aluminum end cover.
 Electrostatic spraying/anodized body finish, corrosion resistance.
 Integrated heat dissipation structure.
 Imported silicon gasket.
 Silicon rubber connection wire. IP65.
 Color: monochrome, monochrome grey-scale transformation, rgb color changing.
 Suitable for dmx512 control system.
 Suitable for outdoor architecture facade lighting, special optics can meet 5 meter wall washer lighting performance.

防护等级 IP Rating IP 44
 输入电压 Input Voltage DC24V
 灯体材质 Housing material 压铸铝 (Aluminum)
 灯体颜色 Finish color 皱纹银silver grey
 面板材料 Cover 压铸铝 (Aluminum)
 显色性 Color rendering Ra>80
 光源品牌 Lamp Brand OSRAM/CREE/PHILIPS
 环境温度 Operating Temperature -10°C~+45°C
 控制方式 Control Mode DMX512

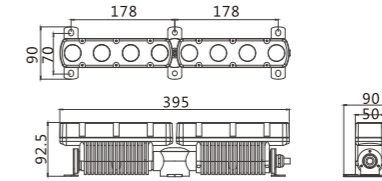
Code	Lamp	光束角Beam Angle	规格Size
202091.009	MAX 9W 3000K/4000K	15°/38°	一节
202092.018	MAX 18W 3000K/4000K	15°/38°	二节
202094.027	MAX 27W 3000K/4000K	15°/38°	三节
202097.036	MAX 36W 3000K/4000K	15°/38°	四节
202097.045	MAX 45W 3000K/4000K	15°/38°	五节
202094.008	MAX 9W RGB in 1	24x70°	一节
202094.024	MAX 27W RGB in 1	24x70°	三节
202094.040	MAX 45W RGB in 1	24x70°	五节
202097.016	MAX 16W RGBW in 1	24x70°	一节
202097.048	MAX 48W RGBW in 1	24x70°	三节
202097.080	MAX 80W RGBW in 1	24x70°	五节



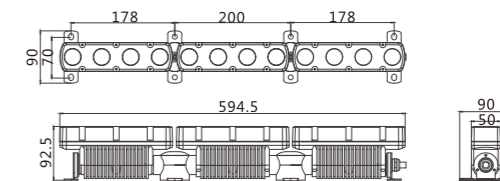
1节Module



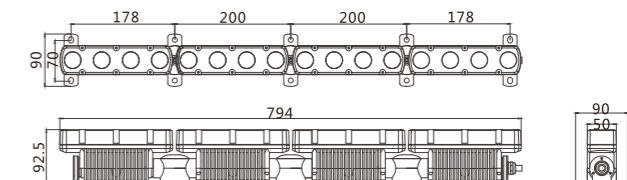
2节Modules



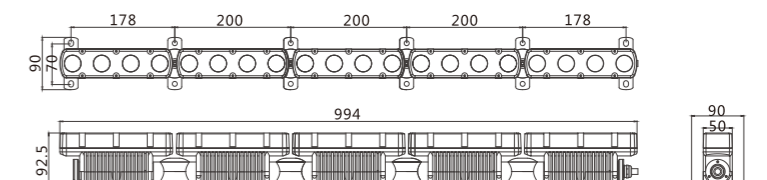
3节Modules

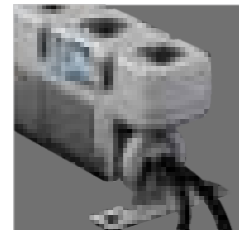
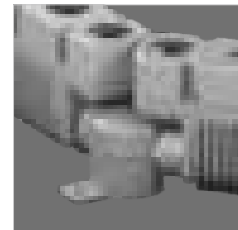


4节Modules

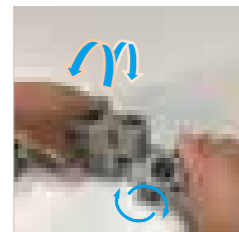


5节Modules



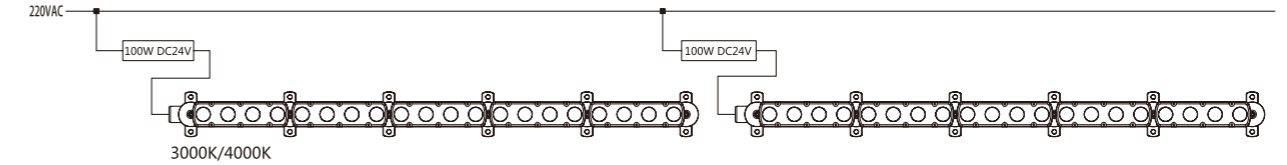


精密设计转向轴承，可以水平、垂直旋转，适用于圆弧、不规则墙面场所环境照明。
Precise design steering bearings, can be horizontal, vertical rotation, for arc, Irregular wall place environment lighting.

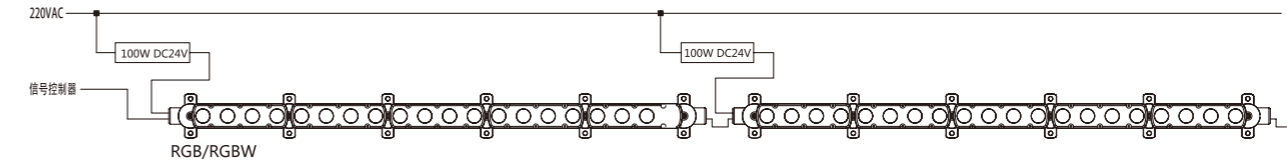


易调节旋转方向锁，调整好旋转及投射角度后，固定方向。
Easy to adjust the rotation direction lock, fix the direction after adjusting the rotation and the projection angle.

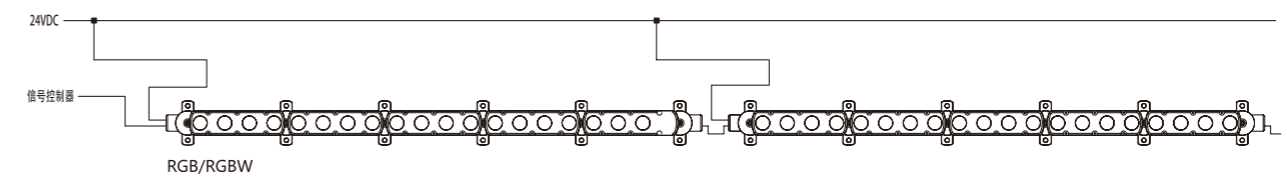
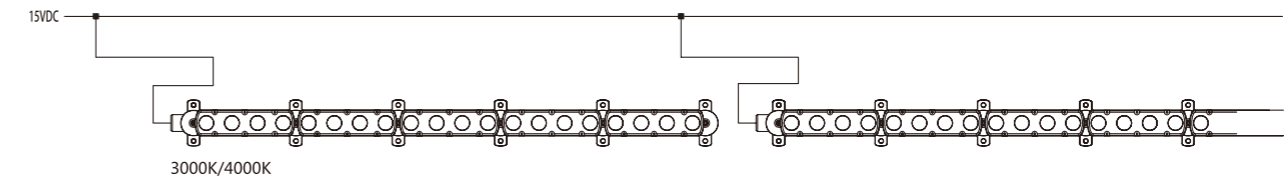
控制系统
CONTROL



1. 每 5 节为一个单元 (80W Max), 每个 100W DC24V 电源最多接灯具 5 节 (灯具总功率不能大于电源输出功率的 80%)
A unit is consisted of 5 modules. 1 PC of 100W DC24V driver can connect 5 modules at most (total power consumption \leq 80% output power)
2. 最大单元连接数根据主线线径大小而定
The maximum qty of connection units depends on wire gauge



1. 每 5 节为一个单元 (80W Max), 每个 100W DC24V 电源最多接灯具 5 节 (灯具总功率不能大于电源输出功率的 80%)
A unit is consisted of 5 modules. 1 PC of 100W DC24V driver can connect 5 modules at most (total power consumption \leq 80% output power)
2. 信号线采用屏蔽线连接，最长 100 米，布线大于 100 米时需增加一台信号放大器
The signal wire is 100m at most, otherwise 1 repeater needs to be added
3. 最大单元连接数根据主线线径大小而定
The maximum qty of connection units depends on wire gauge



1. 每 5 节为一个单元 (80W Max), 每个 100W DC24V 电源最多接灯具 5 节 (灯具总功率不能大于电源输出功率的 80%)
A unit is consisted of 5 modules. 1 PC of 100W DC24V driver can connect 5 modules at most (total power consumption \leq 80% output power)
2. 信号线采用屏蔽线连接，最长 100 米，布线大于 100 米时需增加一台信号放大器
The signal wire is 100m at most, otherwise 1 repeater needs to be added
3. 最大单元连接数根据主线线径大小而定
The maximum qty of connection units depends on wire gauge



刀锋系列洗墙灯是AD建筑立面洗墙灯系列中的专业型产品。
 采用挑选bin区的进口LED光源，确保色温一致。
 采用进口的光学透镜，被照物受光均匀。
 可携带可调角度的挡光板和防眩光装置。
 灯具安装支架带有方向调节刻度盘，力求所装灯具照射角度一致。
 灯具表面保护层采用阳极氧化处理工艺，外表美观且耐腐蚀。
 整灯结构性防水，防护等级达IP65。

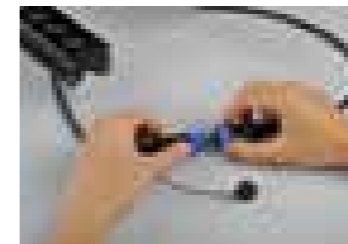
LR-1, with adjustable Anti-glare accessory and direction adjusting dial for the mounting bracket.
 So that it could install lamp irradiation angle.
 Anodized extrusion processed housing finish, nice appearance and corrosion resistance.
 Waterproof housing structure, protection class of IP65.



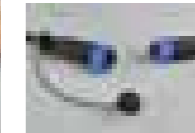
配备AD15°窄角度光源，投射距离长，同时具有良好的均匀度。
 满足高要求的洗墙照明。
 Use 15° narrow beam lamp, with long illumination distance and good evenness. Suitable for high demand wall washing light.



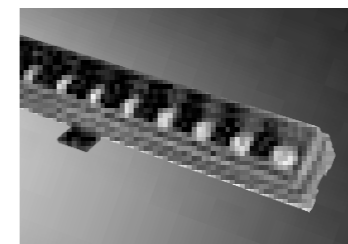
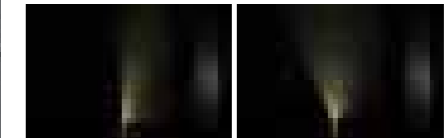
高标准的色温控制，色容差不超过3SDCM
 High standard cct control, color tolerance less than 3 sdcn



简易拆装防水接头 IP68
 Imple installation & disassembly water-proof connector. Ip68
 接头配备防尘端盖
 Connector with dust-proof end cap.



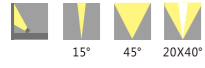
可调节挡光板0-90°
 根据现场照明环境控制眩光
 Adjustable anti-glare shutter according to the scene lighting environment to control the glare



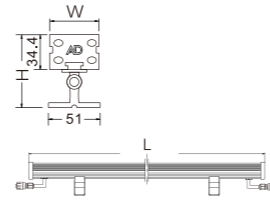
防眩光格栅
 收窄截光角有效防止眩光
 Anti-glare grid



安装支架具有刻度标示
 精准定位投射角度
 Mounting Bracket With the scale mark and projection angle.



防护等级 IP Rating IP 65
 输入电压 Input Voltage DC24V
 灯体材质 Housing material 铝型材 (Aluminum)
 灯体颜色 Finish color 哑黑 (Matte black)
 面板材料 Cover 钢化玻璃 (Tempered Glass)
 显色性 Color rendering Ra>80
 光源品牌 Lamp Brand OSRAM/NICHIA (2000K)
 环境温度 Operating Temperature -10°C~+45°C
 控制方式 Control Mode DMX512

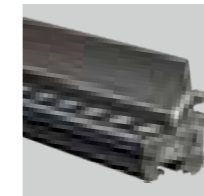


单色不带控制 Single color			L	W	H
302410.024.0	24W(30ps)	2000K/2700K/3000K/4000K/5700K	1000	50	69
302410.030.0	30W(30ps)	2000K/2700K/3000K/4000K/5700K	1000	50	69
302410.036.0	36W(30ps)	2000K/2700K/3000K/4000K/5700K	1000	50	69

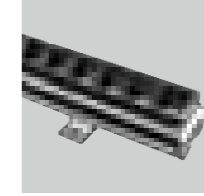
*单色带控制及RGB变色系列将在不久后推出



配件 Accessories



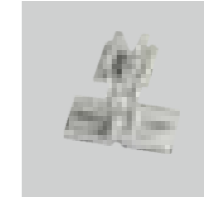
可调角度挡光板
Adjustable anti-glare shutter
92.3
57.6



防眩光格栅
Anti-glare grid
54
34.2
54.4

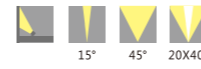
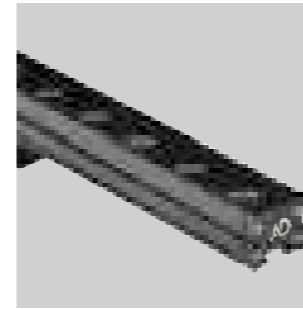


弹弓安装件

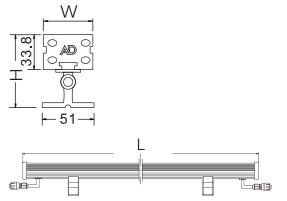


可调节安装件





防护等级 IP Rating IP 65
 输入电压 Input Voltage DC24V
 灯体材质 Housing material 铝型材 (Aluminum)
 灯体颜色 Finish color 哑黑 (Matte black)
 面板材料 Cover 钢化玻璃 (Tempered Glass)
 显色性 Color rendering Ra>80
 光源品牌 Lamp Brand OSRAM/NICHIA (2000K)
 环境温度 Operating Temperature -10°C~+45°C
 控制方式 Control Mode DMX512



单色不带控制 Single color			L	W	H
302411.018.0	18W(30ps)	2000K/2700K/3000K/4000K/5700K	1000	36	72
302411.024.0	24W(30ps)	2000K/2700K/3000K/4000K/5700K	1000	36	72

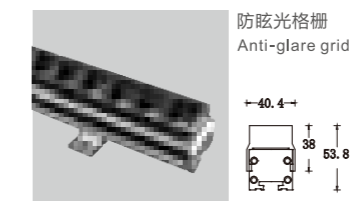
*单色带控制及RGB变色系列将在不久后推出



锋芒系列除可作建筑立面洗墙灯用外，更可嵌于天花内作高空间照明之用。
 锋芒系列采用进口光源及进口光学透镜。
 灯具带可均衡内外压“呼吸装置”，大大提升灯具的防水性能。
 灯具结构性防水，防护等级达IP65。

LR-2 not only can be used as an wall washer light,
 But also can be embedded in the ceiling for the use of high space lighting.
 Waterproof housing structure, Protection class of IP65.

配件 Accessories



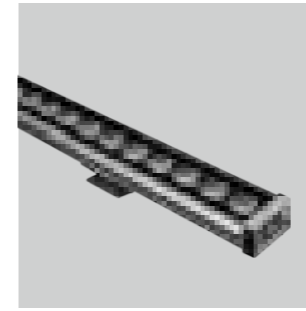
防眩光格栅
Anti-glare grid



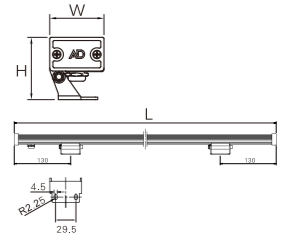
弹弓安装件



可调节安装件

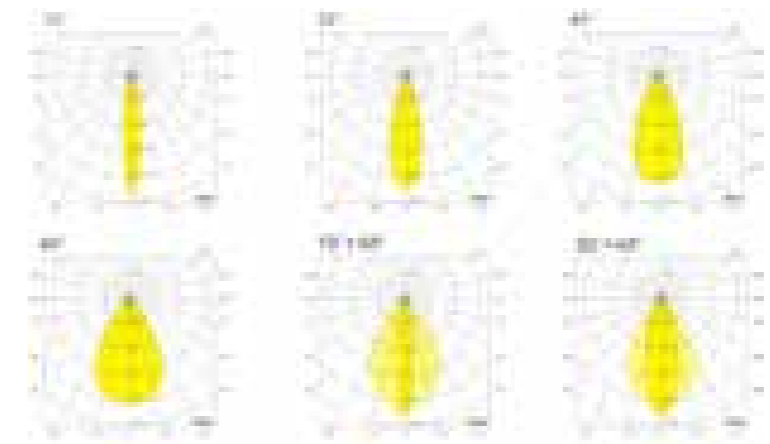


防护等级 IP Rating IP 65
 输入电压 Input Voltage DC24V
 灯体材质 Housing material 铝型材 (Aluminum)
 灯体颜色 Finish color 皱纹银silver grey
 面板材料 Cover 钢化玻璃 (Tempered Glass)
 显色性 Color rendering Ra>80
 光源品牌 Lamp Brand OSRAM/CREE/PHILIPS
 环境温度 Operating Temperature -10°C~+45°C
 控制方式 Control Mode DMX512



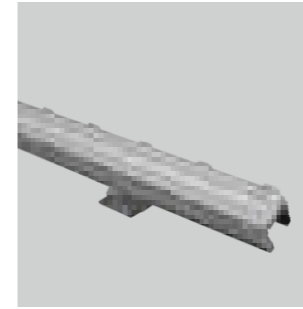
单色不带控制 Single color			L	W	H
202502.024.0	24x1W	3000K/4200K/6000K	1000	43	49
202502.030.0	30x1W	3000K/4200K/6000K	1000	43	49
202502.036.0	36x1W	3000K/4200K/6000K	1000	43	49

带控制 Single color/RGB dimmable			L	W	H
202502.024.1	24x1W	单色/RGB	1000	43	49
202502.036.1	36x1W	单色/RGB	1000	43	49

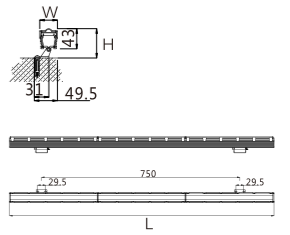


剑威系列是建筑方面洗墙灯。
 配置单颗1WLED灯珠的洗墙灯中最薄的灯具。
 可隐藏在更小的建筑空间中。
 灯具结构性防水，防护等级IP65。
 LX-1 is the thinnest washing wall lamp with single 1W LED lamp,
 and it can be hidden in the smaller building space.
 The waterproof housing structure,
 Protection class of IP65.





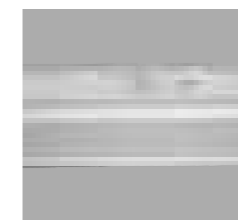
防护等级 IP Rating IP 65
 输入电压 Input Voltage DC24V
 灯体材质 Housing material 铝型材 (Aluminum)
 灯体颜色 Finish color 皱纹银silver grey
 面板材料 Cover PC
 显色性 Color rendering Ra>80
 光源品牌 Lamp Brand OSRAM/CREE/PHILIPS
 环境温度 Operating Temperature -10°C~+45°C
 控制方式 Control Mode DMX512



单色不带控制 Single color			L	W	H
202501.024.0	24x1W	3000K/4200K/6000K	1000	37.5	63
202501.030.0	30x1W	3000K/4200K/6000K	1000	37.5	63
202501.036.0	36x1W	3000K/4200K/6000K	1000	37.5	63

单色可调光 Single color dimmable			L	W	H
202501.024.1	24x1W	3000K/4200K/6000K	1000	37.5	63
202501.036.1	30x1W	3000K/4200K/6000K	1000	37.5	63
202501.036.1	36x1W	3000K/4200K/6000K	1000	37.5	63

幻影系列是洗墙轮廓灯。除了均匀洗亮立面外，灯具侧面发光，勾勒出被照面的轮廓。
 灯具结构性防水，防护等级IP65。
 TX-2 not only can be used to wash the surface,
 But also can light the frame. waterproof housing structure,
 Protection class of IP65.

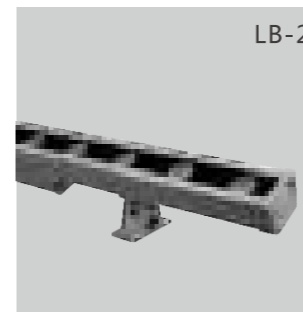
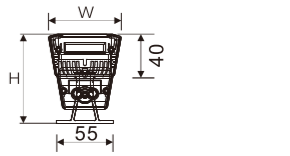


无缝连接 Seamless Connection



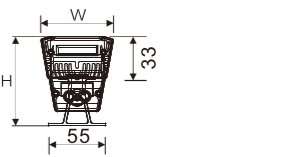
防护等级 IP Rating IP 65
 输入电压 Input Voltage AC220V/DC24V
 灯体材质 Housing material 铝型材 (Aluminum)
 灯体颜色 Finish color 皱纹银silver grey
 面板材料 Cover 钢化玻璃 (Tempered Glass)
 显色性 Color rendering Ra>80
 光源品牌 Lamp Brand OSRAM/CREE/PHILIPS
 环境温度 Operating Temperature -10°C~+45°C
 控制方式 Control Mode DMX512

单色不带控制 Single color			L	W	H
302104.036.0	36x1W	3000K/4200K/6000K	1000	70	85
302104.048.0	48x1W	3000K/4200K/6000K	1000	70	85
302104.054.0	54x1W	3000K/4200K/6000K	1000	70	85
302104.060.0	60x1W	3000K/4200K/6000K	1000	70	85
单色可调光 Single color dimmable			L	W	H
302104.036.1	36x1W	3000K/4200K/6000K	1000	70	85
302104.048.1	48x1W	3000K/4200K/6000K	1000	70	85
302104.054.1	54x1W	3000K/4200K/6000K	1000	70	85
302104.060.1	60x1W	3000K/4200K/6000K	1000	70	85
RGB单颗			L	W	H
302105.036.1	36x1W	RGB	1000	70	85
302105.048.1	48x1W	RGB	1000	70	85
302105.054.1	54x1W	RGB	1000	70	85
302105.060.1	60x1W	RGB	1000	70	85
RGB 3 in1			L	W	H
302106.036.1	MAX 72W	RGB	1000	70	85



防护等级 IP Rating IP 65
 输入电压 Input Voltage AC220V/DC24V
 灯体材质 Housing material 铝型材 (Aluminum)
 灯体颜色 Finish color 皱纹银silver grey
 面板材料 Cover 钢化玻璃 (Tempered Glass)
 显色性 Color rendering Ra>80
 光源品牌 Lamp Brand OSRAM/CREE/PHILIPS
 环境温度 Operating Temperature -10°C~+45°C
 控制方式 Control Mode DMX512

单色不带控制 Single color			L	W	H
302101.012.0	12x1W	3000K/4200K/6000K	1000	46	79
302101.018.0	18x1W	3000K/4200K/6000K	1000	46	79
302101.024.0	24x1W	3000K/4200K/6000K	1000	46	79
302101.036.0	36x1W	3000K/4200K/6000K	1000	46	79
单色可调光 Single color dimmable			L	W	H
302101.012.1	12x1W	3000K/4200K/6000K	1000	46	79
302101.018.1	18x1W	3000K/4200K/6000K	1000	46	79
302101.024.1	24x1W	3000K/4200K/6000K	1000	46	79
302101.036.1	36x1W	3000K/4200K/6000K	1000	46	79
RGB单颗			L	W	H
302102.036.1	36x1W	RGB	1000	46	79
302102.048.1	48x1W	RGB	1000	46	79
302102.054.1	54x1W	RGB	1000	46	79
302102.060.1	60x1W	RGB	1000	46	79
RGB单颗			L	W	H
302103.018.1	MAX 36W	RGB	1000	46	79



战斧系列洗墙灯由战斧I、战斧II两个不同规格的灯体组成。
 灯具系列功率由12W~60W。可使用DC24V和AC220V两种输入电压。
 有多个配光角度选择。
 灯具结构性防水，防护等级IP65。

LB series with multiple light distribution angle selection,
 Waterproof housing structure,
 Protection class of Ip65.



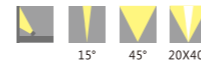
防护等级 IP Rating IP 65
 输入电压 Input Voltage AC220V/DC24V
 灯体材质 Housing material 铝型材 (Aluminum)
 灯体颜色 Finish color 皱纹银silver grey
 面板材料 Cover 钢化玻璃 (Tempered Glass)
 显色性 Color rendering Ra>80
 光源品牌 Lamp Brand OSRAM/CREE/PHILIPS
 环境温度 Operating Temperature -10°C~+45°C
 控制方式 Control Mode DMX512



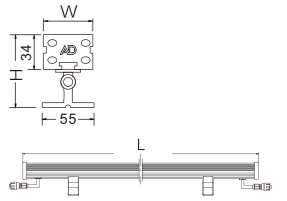
单色不带控制 Single color			L	H
202061.018.0	18x1W	3000K/4200K/6000K	1000	70
202061.024.0	24x1W	3000K/4200K/6000K	1000	70
202061.030.0	30x1W	3000K/4200K/6000K	1000	70
202061.036.0	36x1W	3000K/4200K/6000K	1000	70
单色可调光 Single color dimmable			L	H
202061.018.1	18x1W	3000K/4200K/6000K	1000	79
202061.024.1	24x1W	3000K/4200K/6000K	1000	79
202061.030.1	30x1W	3000K/4200K/6000K	1000	79
202061.036.1	36x1W	3000K/4200K/6000K	1000	79
RGB单颗			L	H
202062.018.1	18x1W	RGB	1000	79
202062.024.1	24x1W	RGB	1000	79
202062.036.1	36x1W	RGB	1000	79
RGB 3 in1			L	H
202063.018.1	MAX 36W	RGB	1000	79

铝合金挤压成型,端盖采用高压压铸铝制件。
 灯具表面保护层采用静电喷塑或阳极氧化处理工艺,使整灯耐腐蚀。
 一体化散热结构,确保LED光源发光效率及使用寿命。
 使用进口耐老化硅胶密封圈,使灯具维持长期IP65防护等级。
 灯具外露的连接线为硅橡胶线,耐阳光紫外线的长期侵害,保障灯具使用安全。
 只适合单色常亮。
 内置驱动IC,直接220V输入,无需外接开关电源,施工更简单,节省施工材料。
 适用于户外建筑立面照明,能满足5M高墙面洗亮效果。

Extrusion aluminum alloy ,die cast aluminum end cover.
 Electrostatic spraying /anodized body finish,corrosion resistance.
 Integrated heat dissipation structure.
 Imported silicon gasket.
 Silicon rubber connection wire.IP65.
 built in IC driver,AC220 input.no need separate power supply ,easy for installation.
 Color:monochrome.
 Suitable for outdoor architecture facade lighting,can meet 5 meter wall washer lighting performance.



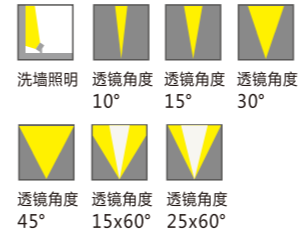
防护等级 IP Rating IP 65
 输入电压 Input Voltage DC24V
 灯体材质 Housing material 铝型材 (Aluminum)
 灯体颜色 Finish color 哑黑 (Matte black)
 面板材料 Cover 钢化玻璃 (Tempered Glass)
 显色性 Color rendering Ra>80
 光源品牌 Lamp Brand OSRAM/CREE/PHILIPS
 环境温度 Operating Temperature -10°C~+45°C
 控制方式 Control Mode DMX512



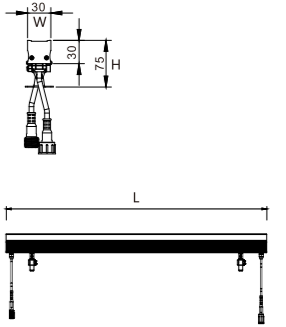
单色不带控制 Single color			L	W	H
202001.018.0	18x1W	2700K/3000K/4000K/5700K	1000	36	80
202001.024.0	24x1W	2700K/3000K/4000K/5700K	1000	36	80
202001.036.0	36x1W	2700K/3000K/4000K/5700K	1000	36	80
单色可调光 Single color dimmable			L	W	H
202001.018.1	18x1W	2700K/3000K/4000K/5700K	1000	36	80
202001.024.1	24x1W	2700K/3000K/4000K/5700K	1000	36	80
202001.036.1	36x1W	2700K/3000K/4000K/5700K	1000	36	80
RGB单颗			L	W	H
202002.018.1	18x1W	RGB	1000	36	80
202002.024.1	24x1W	RGB	1000	36	80
202002.036.1	36x1W	RGB	1000	36	80

锋芒系列除可作建筑立面洗墙灯用外，更可嵌于天花内作高空间照明之用。
 锋芒系列采用进口光源及进口光学透镜。
 灯具带可均衡内外压“呼吸装置”，大大提升灯具的防水性能。
 灯具结构性防水，防护等级达IP65。

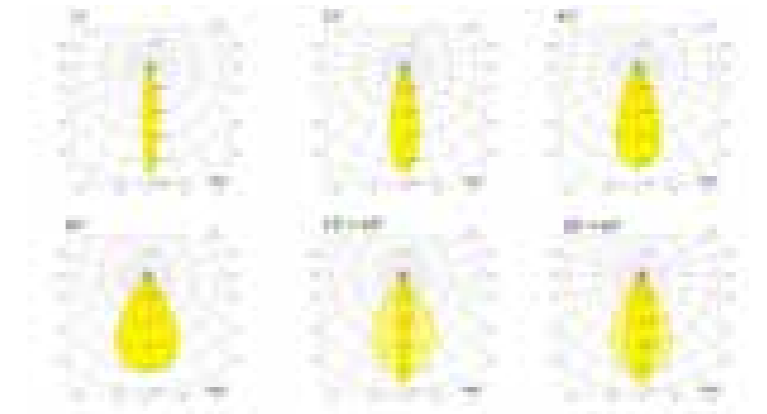
LR-2 not only can be used as an wall washer light,
 But also can be embedded in the ceiling for the use of high space lighting.
 Waterproof housing structure, Protection class of IP65.



防护等级 IP Rating IP 65
 输入电压 Input Voltage DC24V
 灯体材质 Housing material 铝型材 (Aluminum)
 灯体颜色 Finish color 皱纹银silver grey
 显色性 Color rendering Ra>80
 光源品牌 Lamp Brand CREE/OSRAM
 环境温度 Operating Temperature -10°C~+45°C



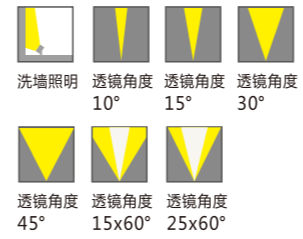
单色不带控制 Single color				发光角度beam angle			L	W	H
302204.018.0	18x1W	3000K/4200K	30°/45°/15x60°/25x45°	1000	30	75			
302204.024.0	24x1W	3000K/4200K	10°/15°/30°/45°/15x60°/25x45°	1000	30	75			
单色可调光 Single color dimmable				发光角度beam angle			L	W	H
302204.018.1	18x1W	3000K/4200K	30°/45°/15x60°/25x45°	1000	30	75			
302204.024.1	24x1W	3000K/4200K	10°/15°/30°/45°/15x60°/25x45°	1000	30	75			
RGB单颗				发光角度beam angle			L	W	H
302205.018.1	18x1W	RGB	30°/45°/15x60°/25x45°	1000	30	75			
302205.024.1	24x1W	RGB	10°/15°/30°/45°/15x60°/25x45°	1000	30	75			



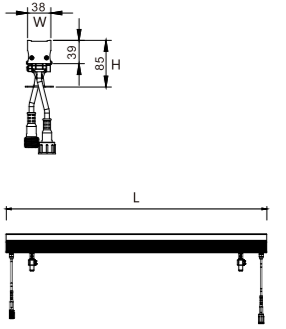
线性洗墙灯

由精致I、精致II及精致III三种规格组成的系列产品。
 配置功率12~36W。可以满足普通立面洗墙效果，
 同时也能满足不同的安装空间使用。
 灯具结构防水、防护等级IP65。

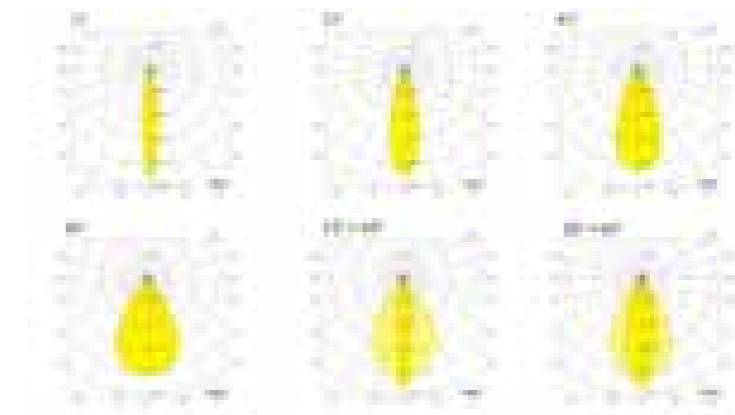
LX1,LX2,LX3 can meet need with the common wall
 washing effect,
 and also meet need with the different installation space.
 Waterproof housing structure,
 Protection class of IP65.



防护等级 IP Rating IP 65
 输入电压 Input Voltage DC24V
 灯体材质 Housing material 铝型材 (Aluminum)
 灯体颜色 Finish color 皱纹银silver grey
 显色性 Color rendering Ra>80
 光源品牌 Lamp Brand CREE/OSRAM
 环境温度 Operating Temperature -10°C~+45°C



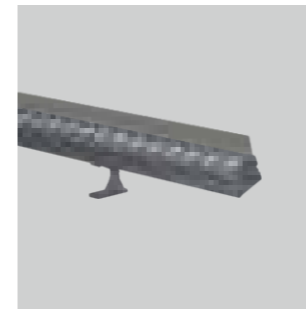
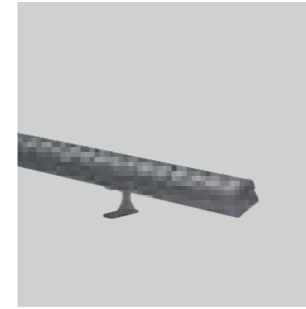
单色不带控制 Single color			L	W	H
302207.030.0	30x1W	3000K/4200K	1000	38	85
302207.036.0	36x1W	3000K/4200K	1000	38	85
单色可调光 Single color dimmable			L	W	H
302207.036.1	36x1W	3000K/4200K	1000	38	85
RGB单颗			L	W	H
302208.036.1	36x1W	RGB	1000	38	85



线性洗墙灯

由精致I、精致II及精致III三种规格组成的系列产品。
 配置功率12~36W。可以满足普通立面洗墙效果，
 同时也能满足不同的安装空间使用。
 灯具结构防水、防护等级IP65。

LX1,LX2,LX3 can meet need with the common wall
 washing effect,
 and also meet need with the different installation space.
 Waterproof housing structure,
 Protection class of IP65.



莱拉6是小功率LED洗墙灯系列。配多种角度透镜，体积小便于窄小空间安装。防护等级IP65。属经济型洗墙灯。

LINELIGHT VI is a small power LED the series of wall washer light. With a variety of angle lens, volume of the narrow space of installation. Protection class IP65 .

防护等级 IP Rating IP 65
 输入电压 Input Voltage DC24V
 灯体材质 Housing material 铝型材 (Aluminum)
 灯体颜色 Finish color 皱纹银silver grey
 显色性 Color rendering Ra>80
 光源品牌 Lamp Brand OSRAM/CREE/PHILIPS
 环境温度 Operating Temperature -10°C~+45°C
 控制方式 Control Mode DMX512

单色不带控制 Single color				L	W	H
302110.010.0	10W	3000K/4200K/6000K		1000	27	47
302110.012.0	12W	3000K/4200K/6000K		1000	27	47
302110.015.0	15W	3000K/4200K/6000K		1000	27	47

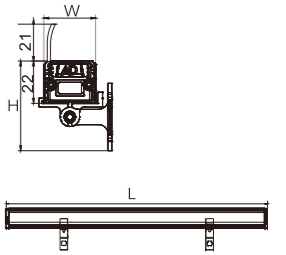
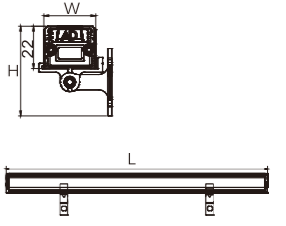
单色可调光 Single color dimmable				L	W	H
302110.010.1	10W	3000K/4200K/6000K		1000	27	47
302110.012.1	12W	3000K/4200K/6000K		1000	27	47
302110.015.1	15W	3000K/4200K/6000K		1000	27	47

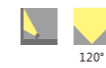
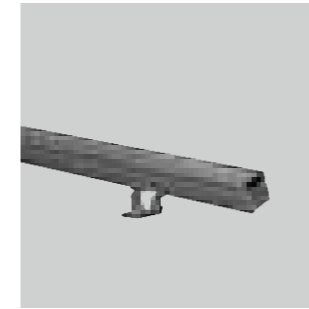
RGB in 1/RGBW in 1				L	W	H
302112.010.1	10W	RGB/RGBW		1000	27	47
302112.012.1	12W	RGB/RGBW		1000	27	47
302112.015.1	15W	RGB/RGBW		1000	27	47

单色不带控制 Single color				L	W	H
302118.010.0	10W	3000K/4200K/6000K		1000	27	47
302118.012.0	12W	3000K/4200K/6000K		1000	27	47
302118.015.0	15W	3000K/4200K/6000K		1000	27	47

单色可调光 Single color dimmable				L	W	H
302118.010.1	10W	3000K/4200K/6000K		1000	27	47
302118.012.1	12W	3000K/4200K/6000K		1000	27	47
302118.015.1	15W	3000K/4200K/6000K		1000	27	47

RGB in 1/RGBW in 1				L	W	H
302119.010.1	10W	RGB/RGBW		1000	27	47
302119.012.1	12W	RGB/RGBW		1000	27	47
302119.015.1	15W	RGB/RGBW		1000	27	47

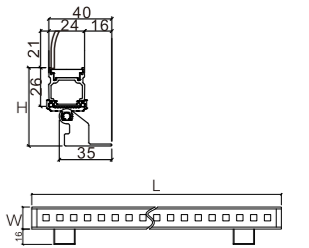
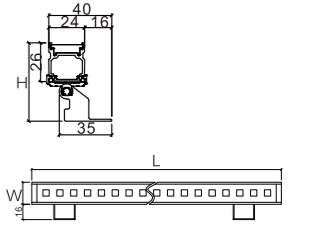




防护等级 IP Rating IP 65
 输入电压 Input Voltage DC24V
 灯体材质 Housing material 铝型材 (Aluminum)
 灯体颜色 Finish color 皱纹银silver grey
 显色性 Color rendering Ra>80
 光源品牌 Lamp Brand OSRAM/CREE/PHILIPS
 环境温度 Operating Temperature -10°C~+45°C
 控制方式 Control Mode DMX512

单色不带控制 Single color				L	W	H
302113.010.0	10W	3000K/4200K/6000K		1000	24	52
302113.012.0	12W	3000K/4200K/6000K		1000	24	52
302113.015.0	15W	3000K/4200K/6000K		1000	24	52
单色可调光 Single color dimmable				L	W	H
302113.010.1	10W	3000K/4200K/6000K		1000	24	52
302113.012.1	12W	3000K/4200K/6000K		1000	24	52
302113.015.1	15W	3000K/4200K/6000K		1000	24	52
RGB in 1/ RGBW in 1				L	W	H
302115.010.1	10W	RGB/RGBW		1000	24	52
302115.012.1	12W	RGB/RGBW		1000	24	52
302115.015.1	15W	RGB/RGBW		1000	24	52

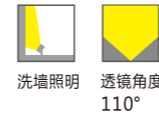
单色不带控制 Single color				L	W	H
302120.010.0	10W	3000K/4200K/6000K		1000	24	52
302120.012.0	12W	3000K/4200K/6000K		1000	24	52
302120.015.0	15W	3000K/4200K/6000K		1000	24	52
单色可调光 Single color dimmable				L	W	H
302120.010.1	10W	3000K/4200K/6000K		1000	24	52
302120.012.1	12W	3000K/4200K/6000K		1000	24	52
302120.015.1	15W	3000K/4200K/6000K		1000	24	52
RGB in 1/ RGBW in 1				L	W	H
302121.010.1	10W	RGB/RGBW		1000	24	52
302121.012.1	12W	RGB/RGBW		1000	24	52
302121.015.1	15W	RGB/RGBW		1000	24	52



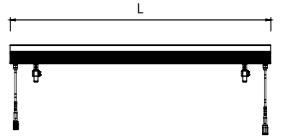
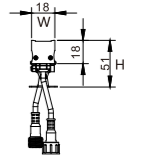
莱拉7小功率洗墙灯是一款简易的洗墙灯。适合50mm高度的矮立面洗墙用。可携带挡光板，并能做到无间断连接光影。防护等级达IP65。

LINELIGHT VII is suitable for 50mm height of facade wall washer using, It can achieve seamless connection of light and shadow. Protection class IP65.





防护等级 IP Rating IP 65
 输入电压 Input Voltage DC24V
 灯体材质 Housing material 铝型材 (Aluminum)
 灯体颜色 Finish color 皱纹银silver grey
 显色性 Color rendering Ra>80
 光源品牌 Lamp Brand CREE
 环境温度 Operating Temperature -10°C~+45°C



单色不带控制 Single color		L	W	H
302201.012.0	12W	3000K/4200K	1000	18 51



线性洗墙灯

由精致I、精致II及精致III三种规格组成的系列产品。
 配置功率12~36W。可以满足普通立面洗墙效果，
 同时也能满足不同的安装空间使用。
 灯具结构防水、防护等级IP65。

LX1,LX2,LX3 can meet need with the common wall
 washing effect,
 and also meet need with the different installation space.
 Waterproof housing structure,
 Protection class of IP65.